

ATTO AZIENDALE

A.S.L. NO – NOVARA

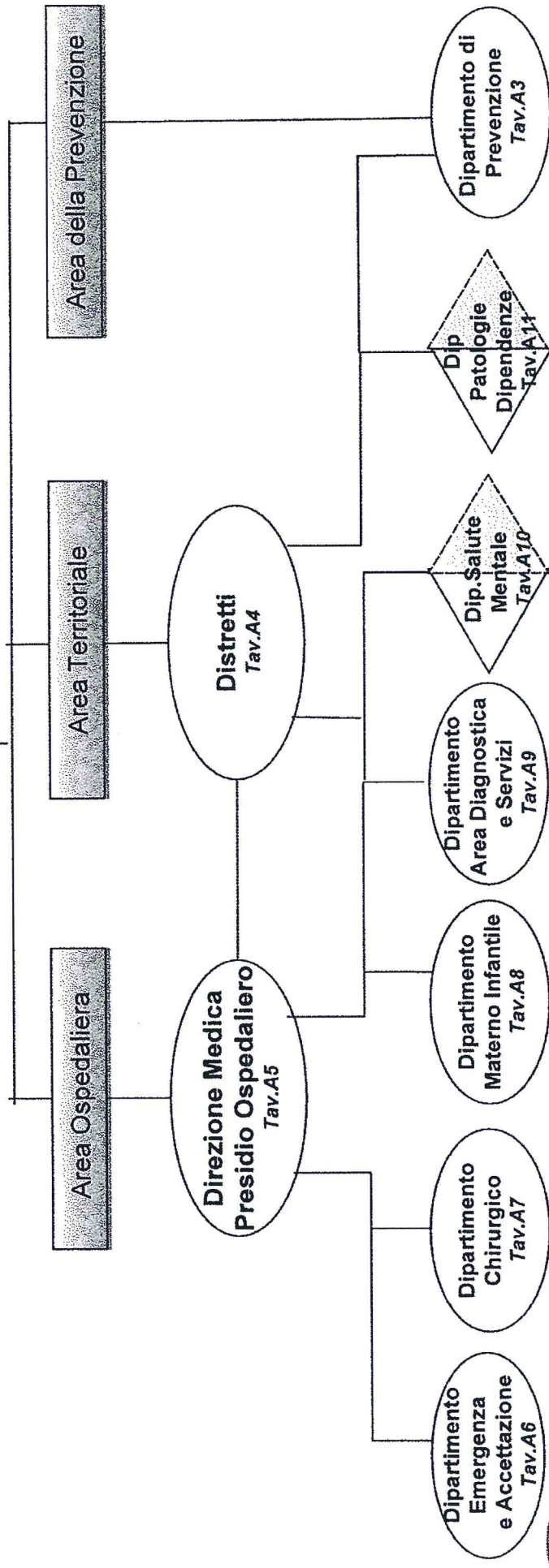
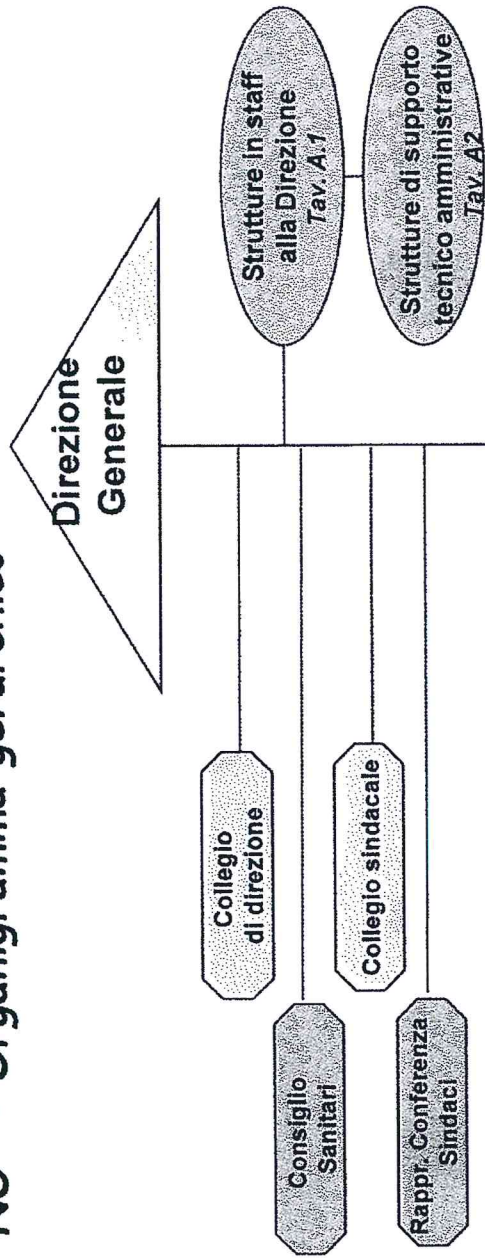
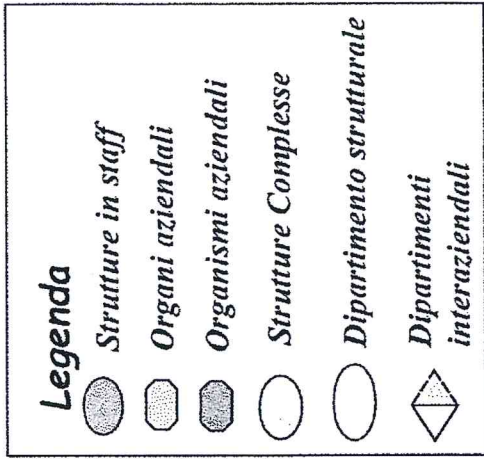
Allegato A

A1 Rappresentazione iconografica

A2 Tabella sinottica



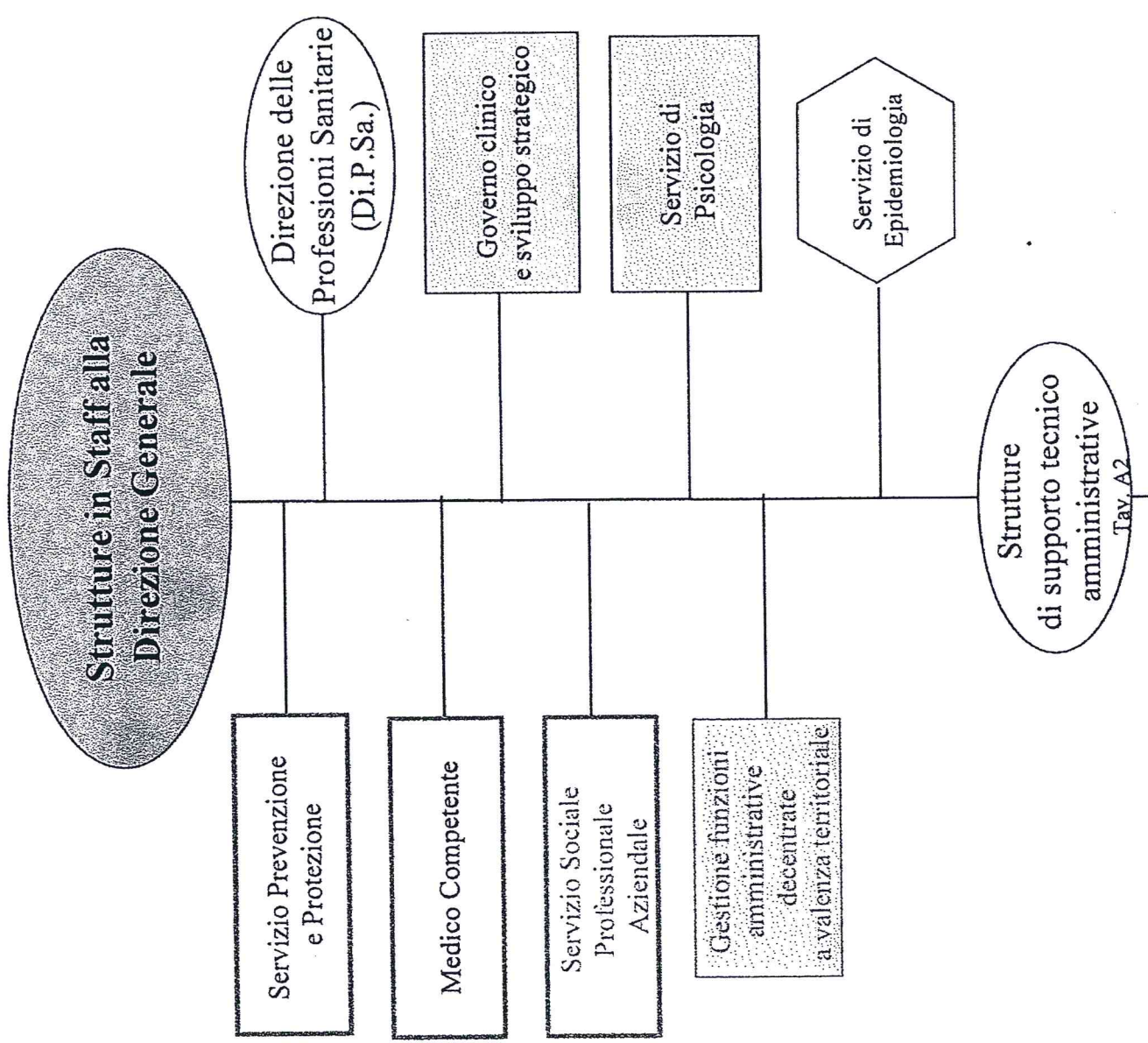
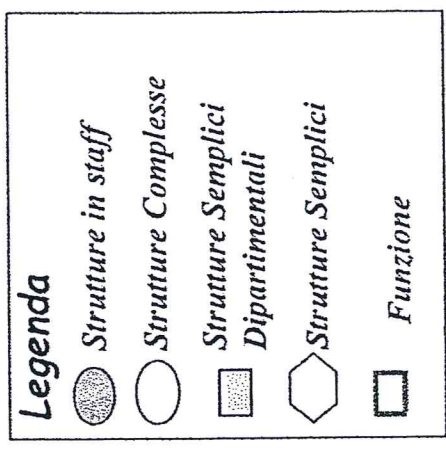
A- ASL "NO" - Organigramma gerarchico



ASL "NO" - Strutture in Staff alla Direzione Generale

1 9 8

24 MAG. 2019

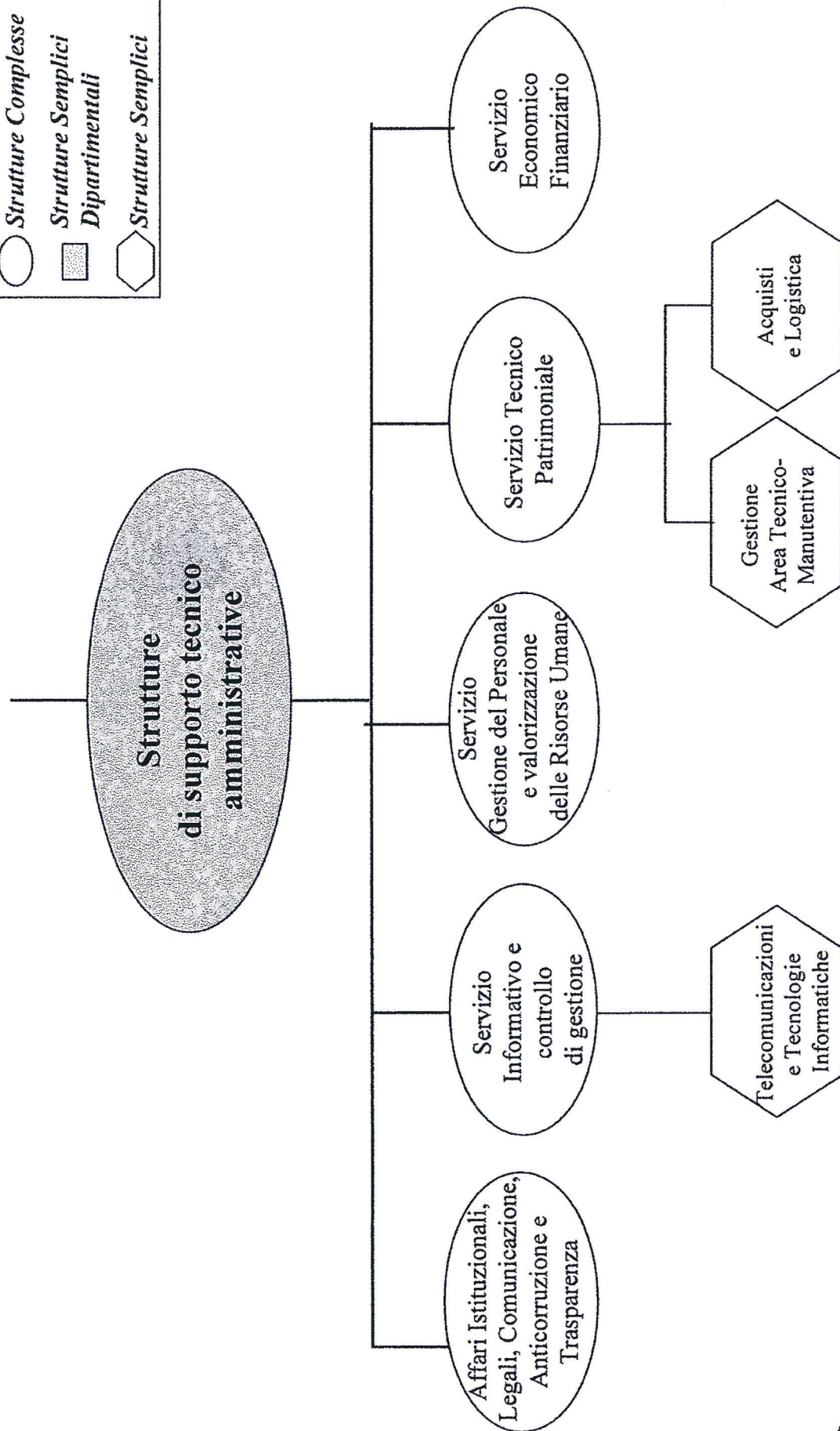
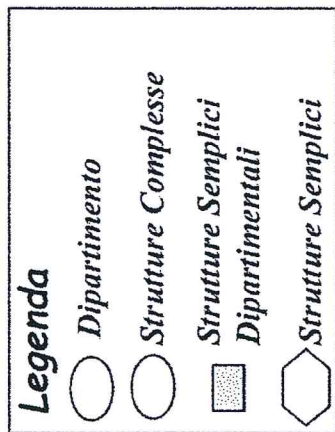


TAV. A.1

ASL "NO" - Strutture di supporto tecnico amministrative

1988





24 MAG. 2019

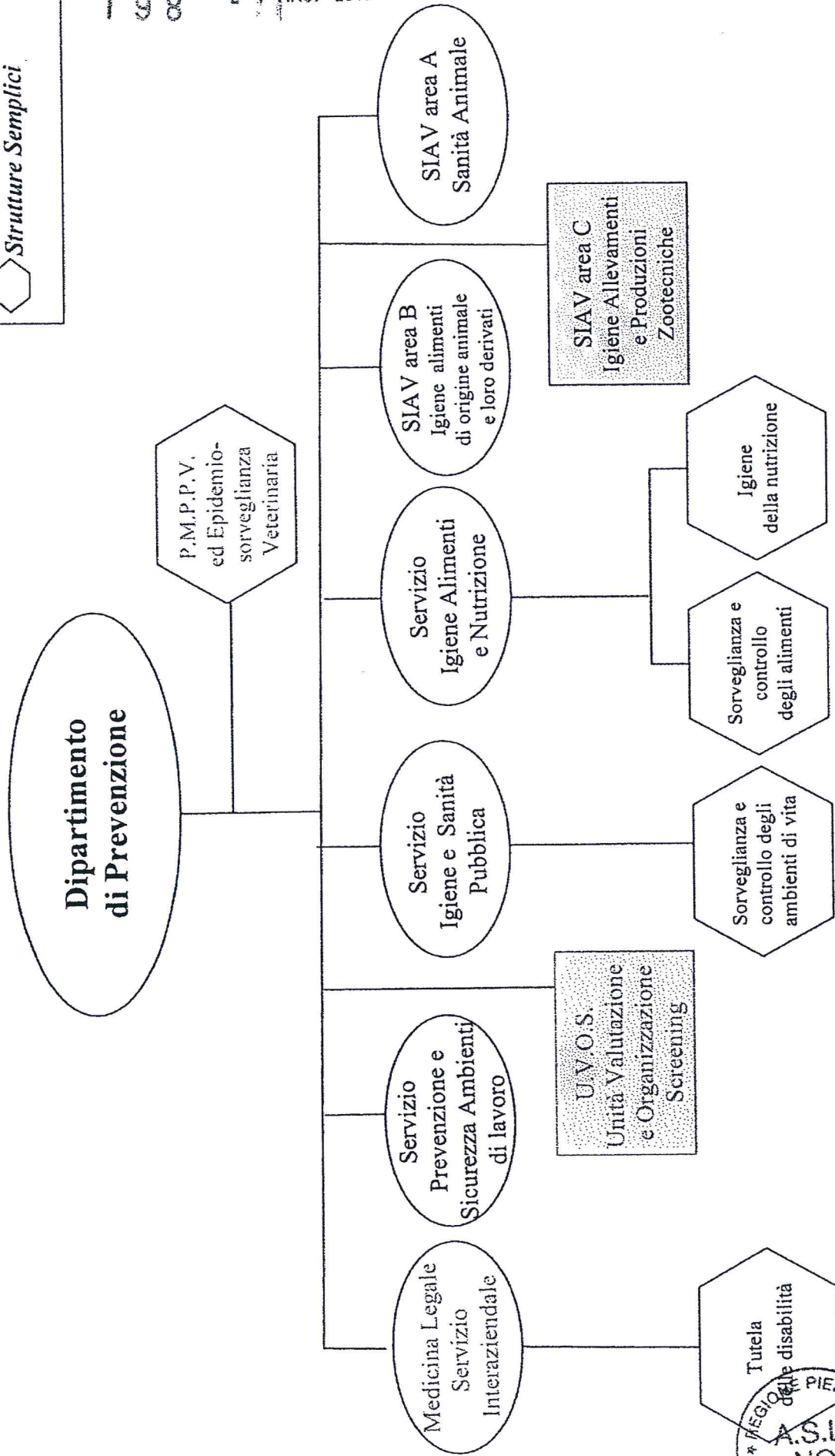


ASL "NO" - Dipartimento di Prevenzione

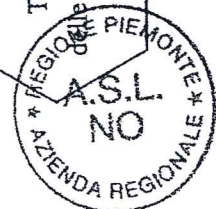
Area della PREVENZIONE

Legenda

-  Dipartimento
-  Strutture Complesse
-  Strutture Semplici Dipartimentali
-  Strutture Semplici

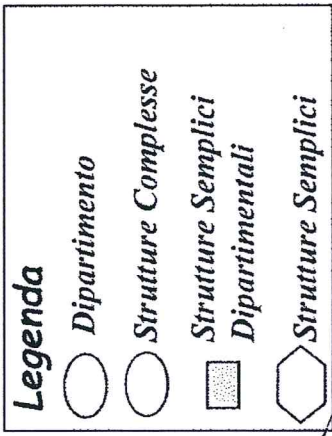


1 0 8 2 4 MAG. 2019



ASL "NO" - Distretti

Area TERRITORIALE



UCCCP

Servizio Sanità Penitenziaria

Distretto Urbano Novara

Distretto Area NORD

Distretto Area SUD

Coordinamento Cure Primarie e Specialistiche

Continuità Ospedale-Territorio e presa in carico della fragilità

Dip Salute Mentale

Dip Pat Dipendenze

Dip Area Diagn e Servizi

Dip Prevenzione

Dip Materno Infantile

DMPO Dipartimenti Ospedale Borgomanero

Cure Palliative Hospice Terapia del dolore

Assistenza territoriale ambulatoriale e domiciliare

ATI

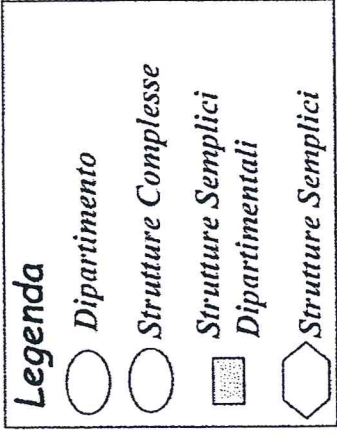
ATI

ATI



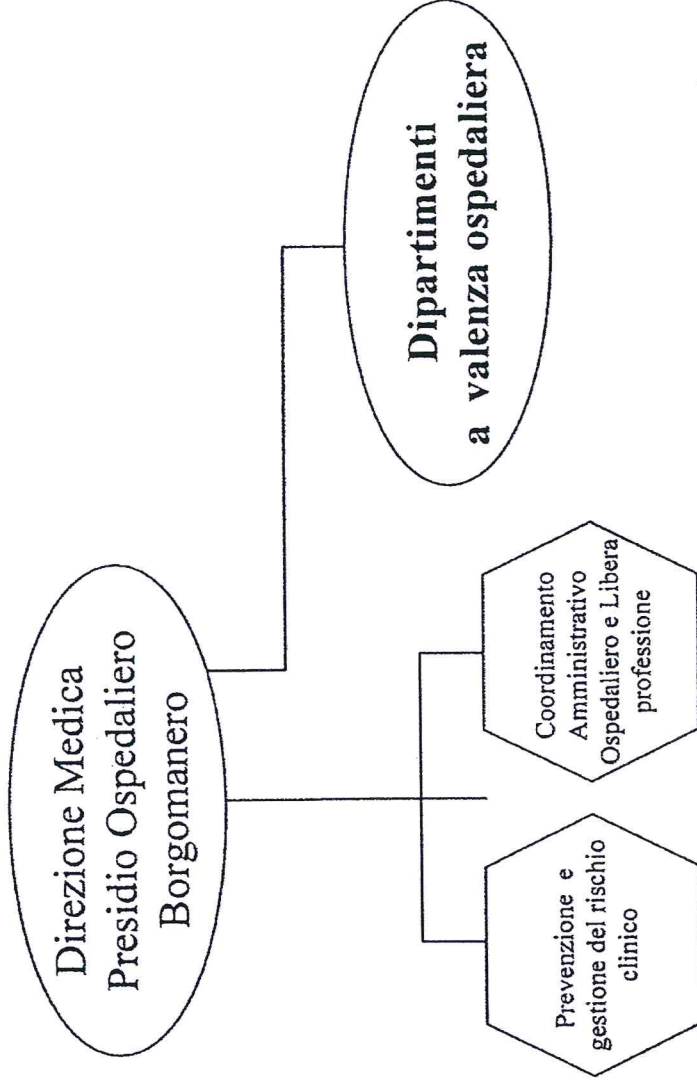
ASL "NO" - Direzione Medica di Presidio Ospedaliero

Area OSPEDALIERA



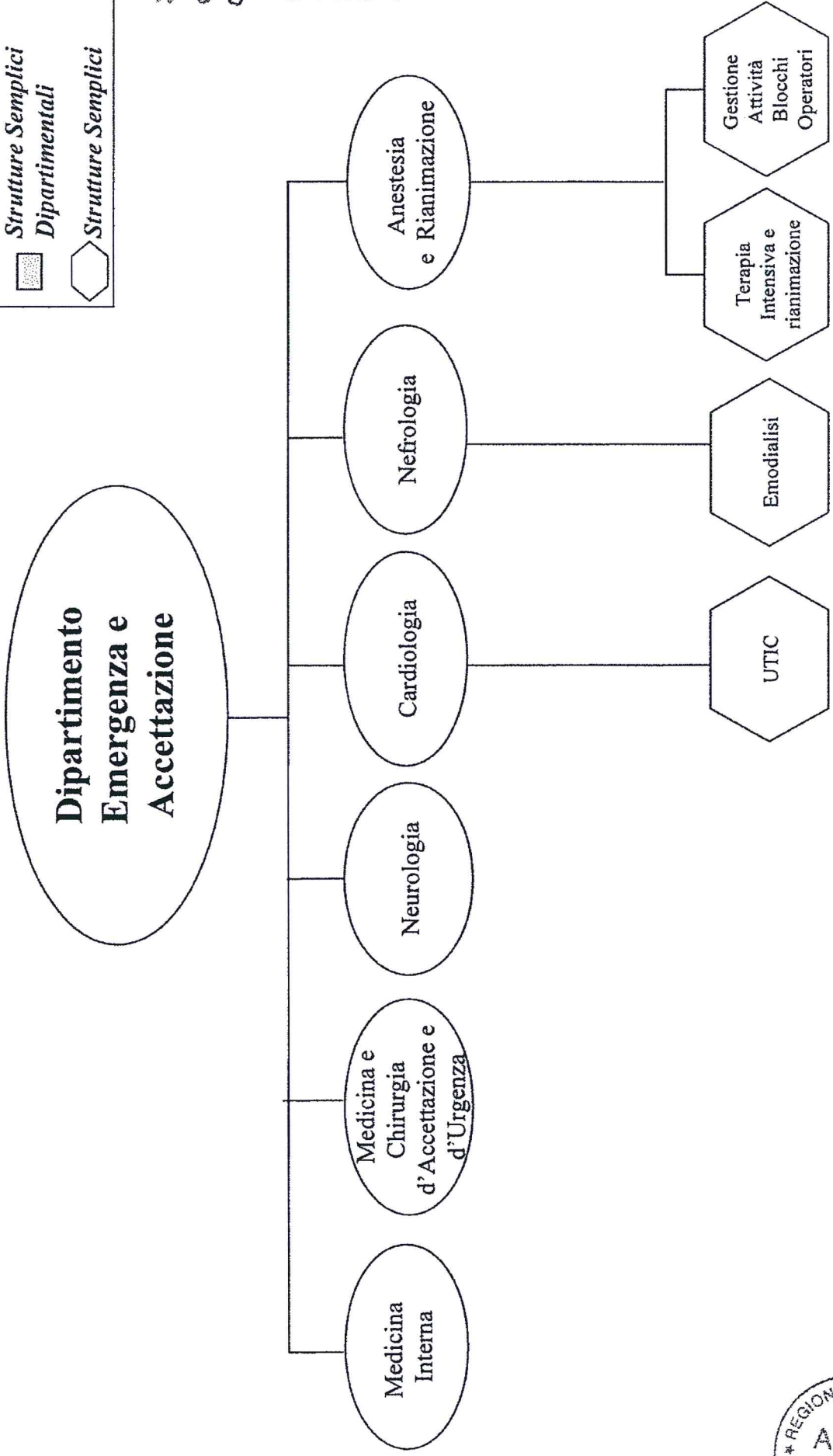
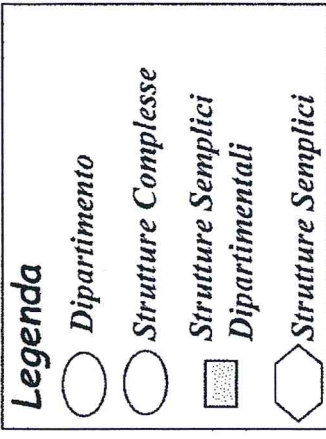
198

24 MAG. 2019

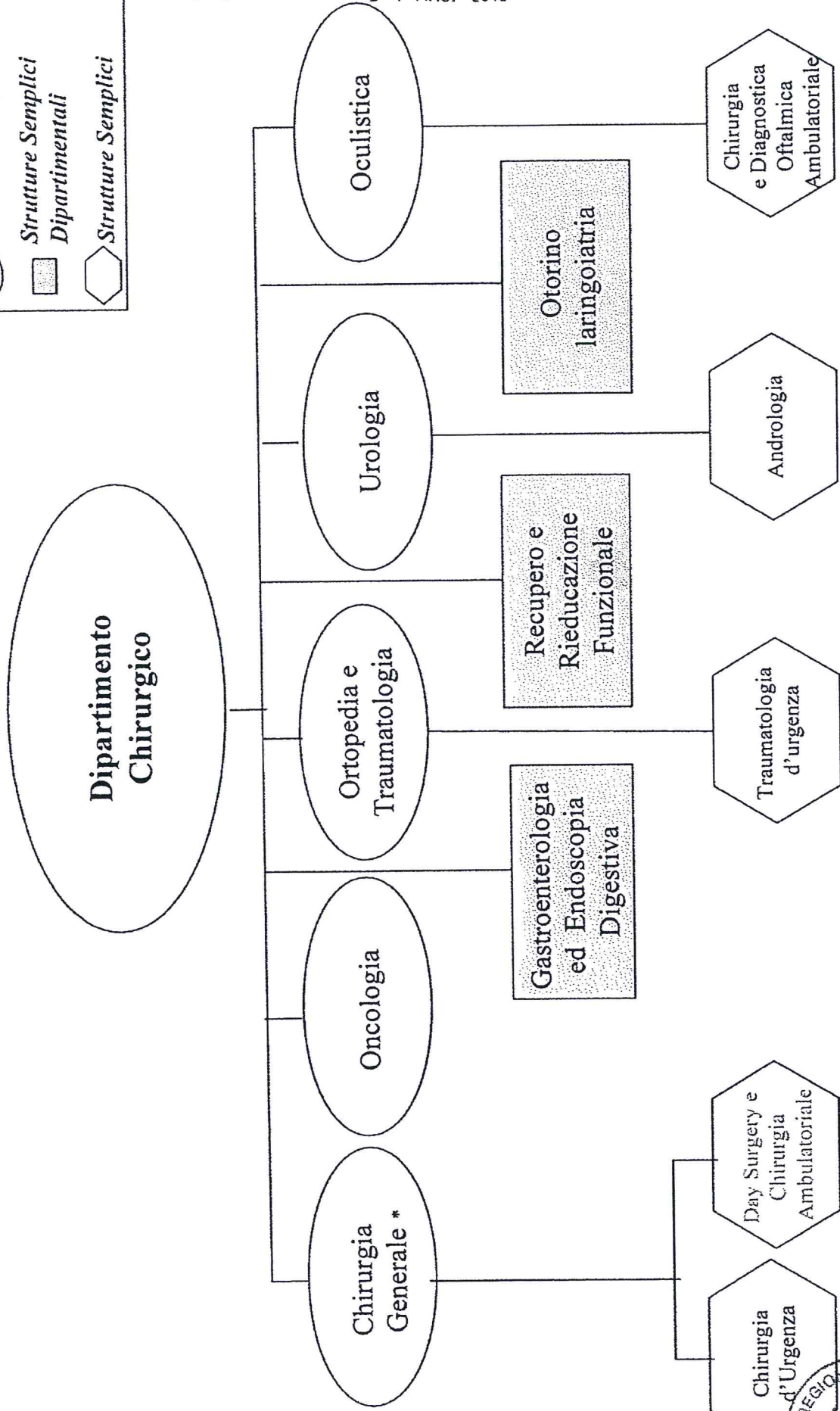
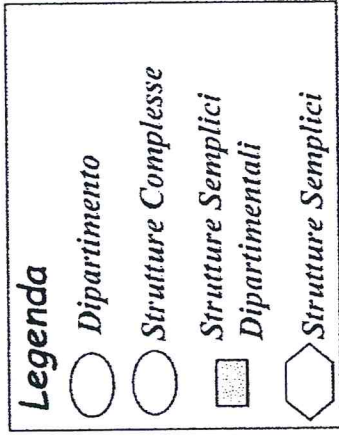


ASL "NO" - Dipartimento Emergenza e Accettazione

24 MAG. 2019



ASL "NO" - Dipartimento Chirurgico



1008

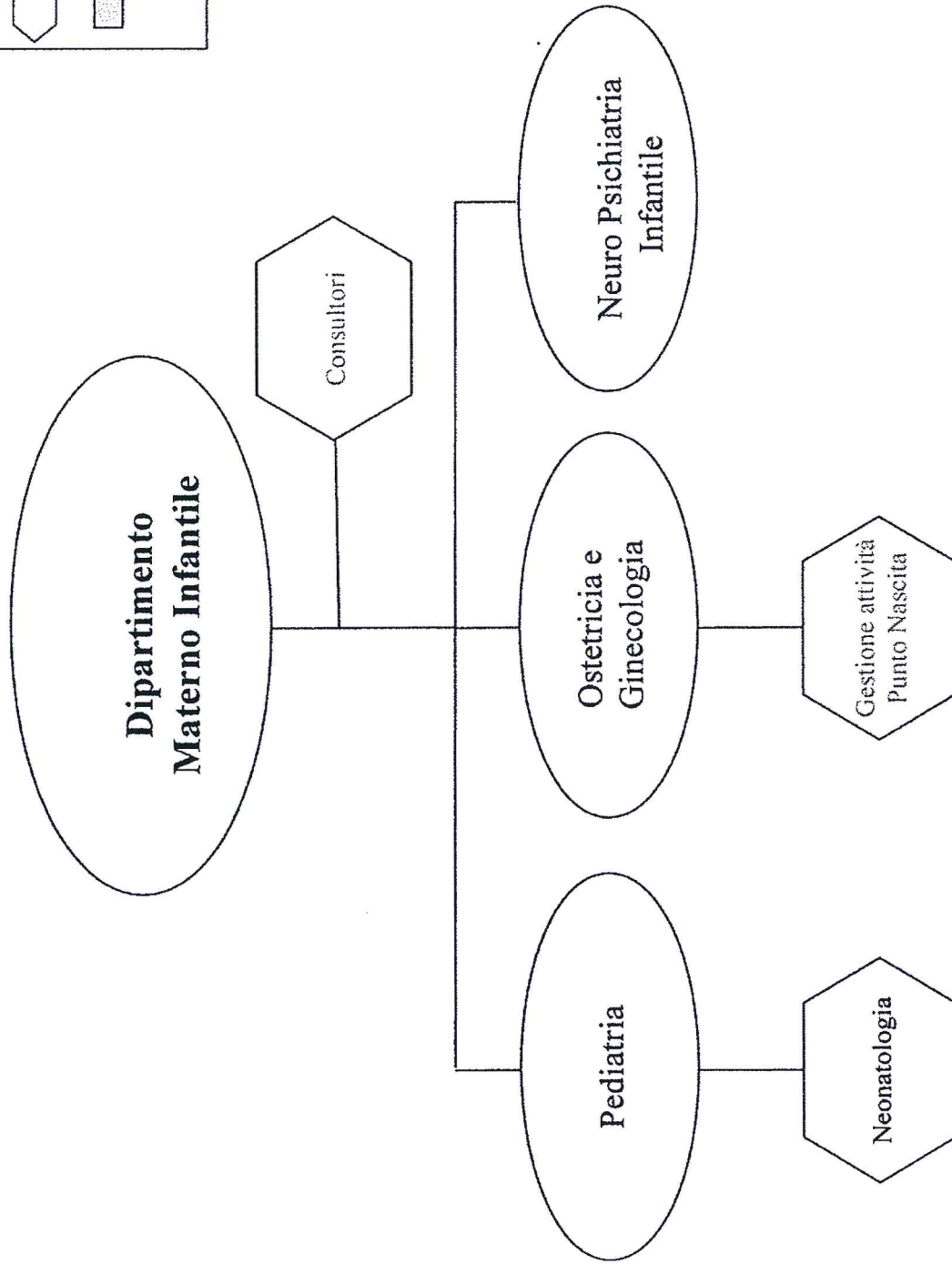
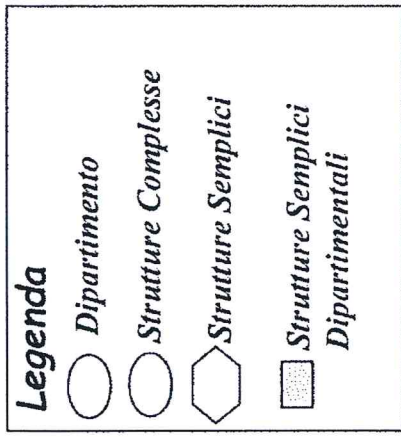
24 MAG. 2019

TAV. A7

ASL "NO" - Dipartimento Chirurgico - Organigramma delle funzioni di Breast Unit con accordo interaziendale con ASL VCO



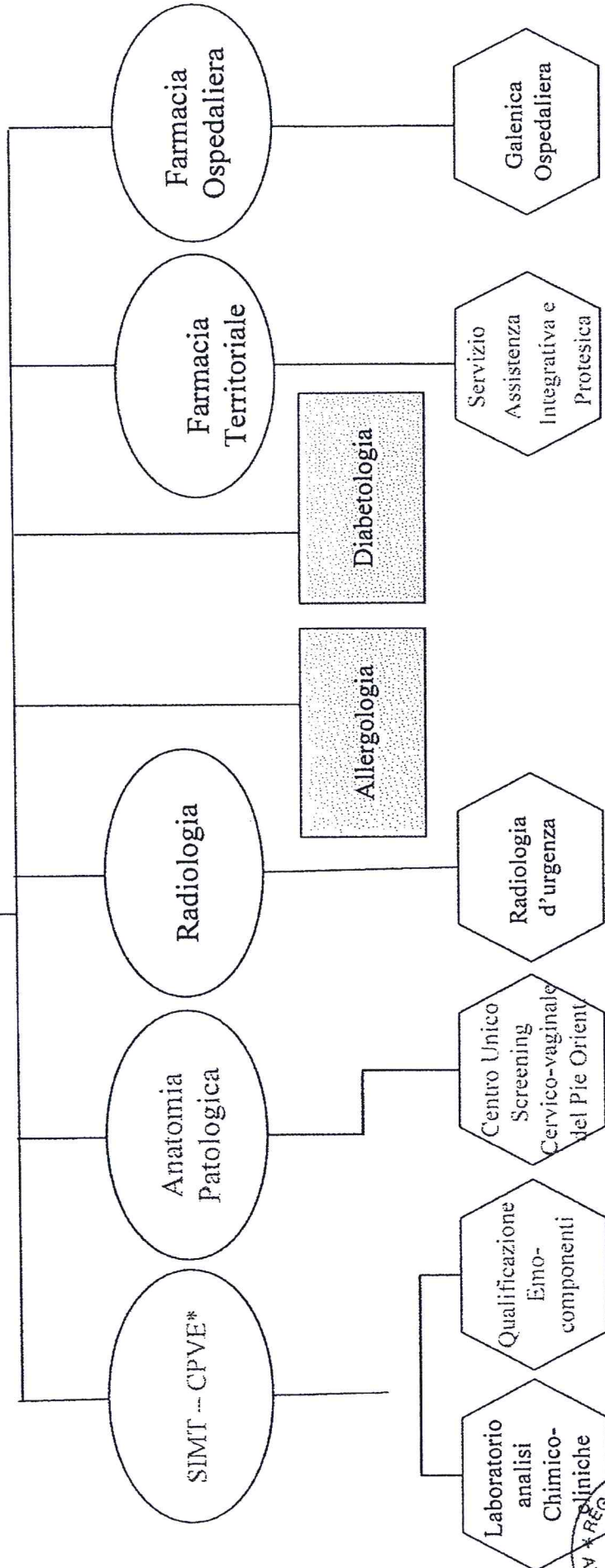
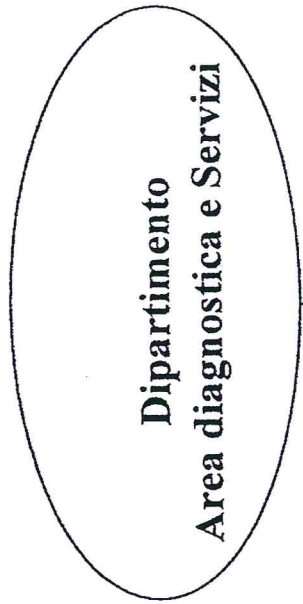
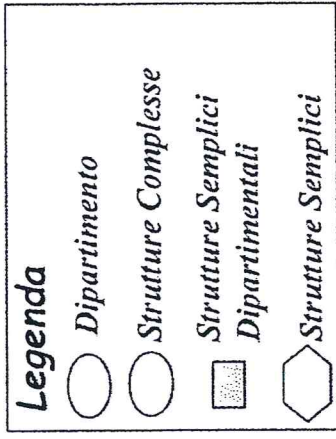
ASL "NO" - Dipartimento Materno Infantile



1 9 8 2 4 MAG. 2019



ASL "NO" - Dipartimento Area Diagnostica e Servizi



mod. 00 00

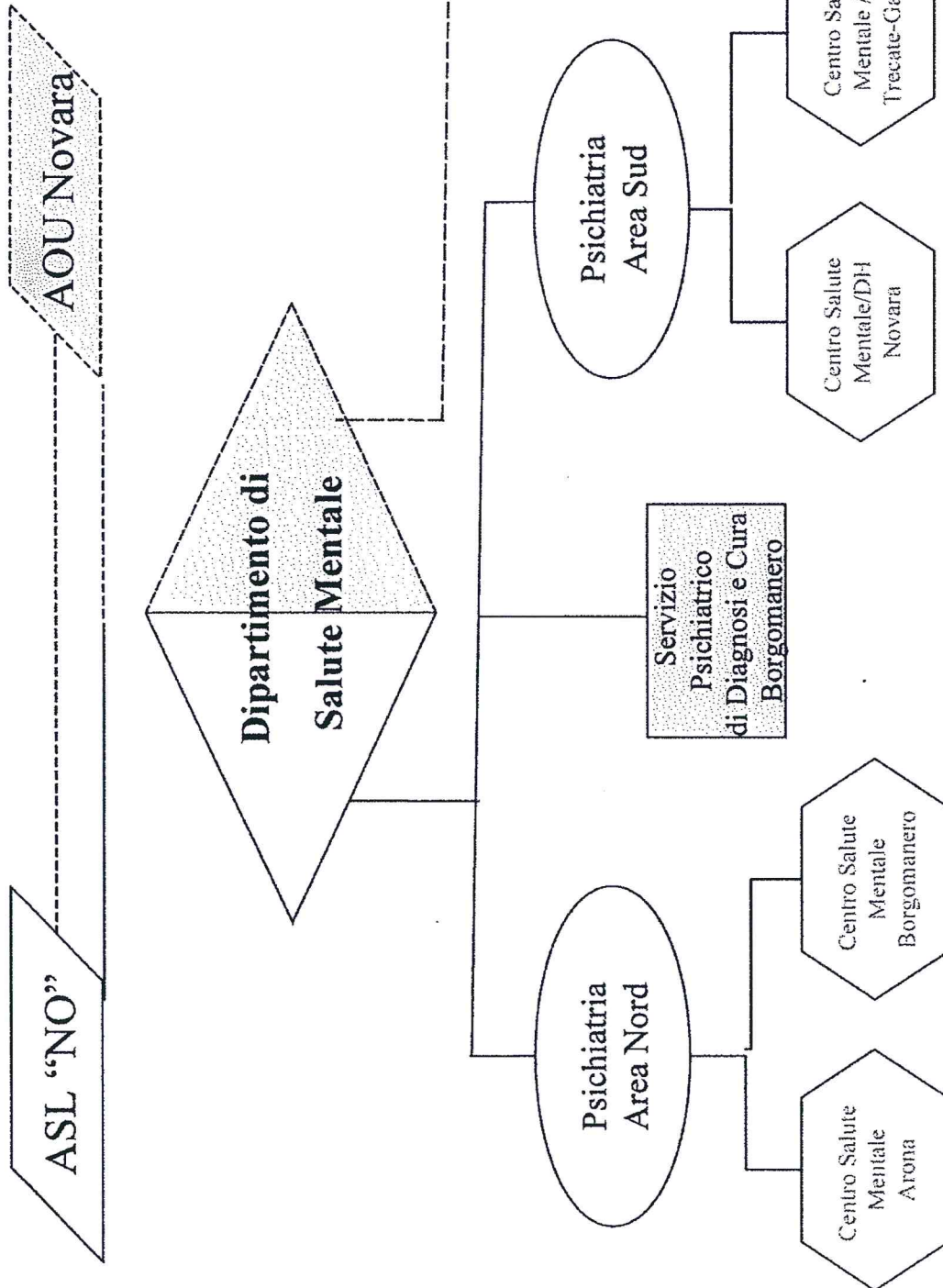
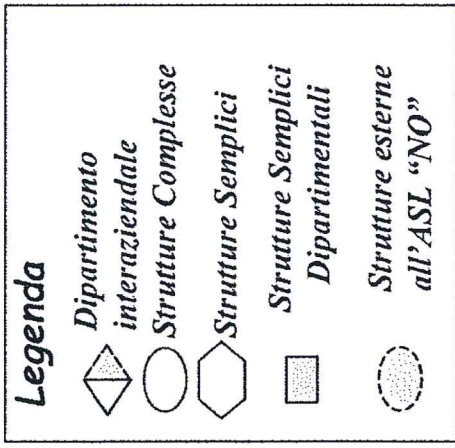
2.4 MAG. 2019



Servizio Immuno Trasfusione (SINT) - Centro Produzione e Validazione Emocomponenti (CPVE)

TAV. A9

ASL "NO" - Dipartimento di Salute Mentale- DSM (Dipartimento Interaziendale strutturale ASL NO - AOU Novara)

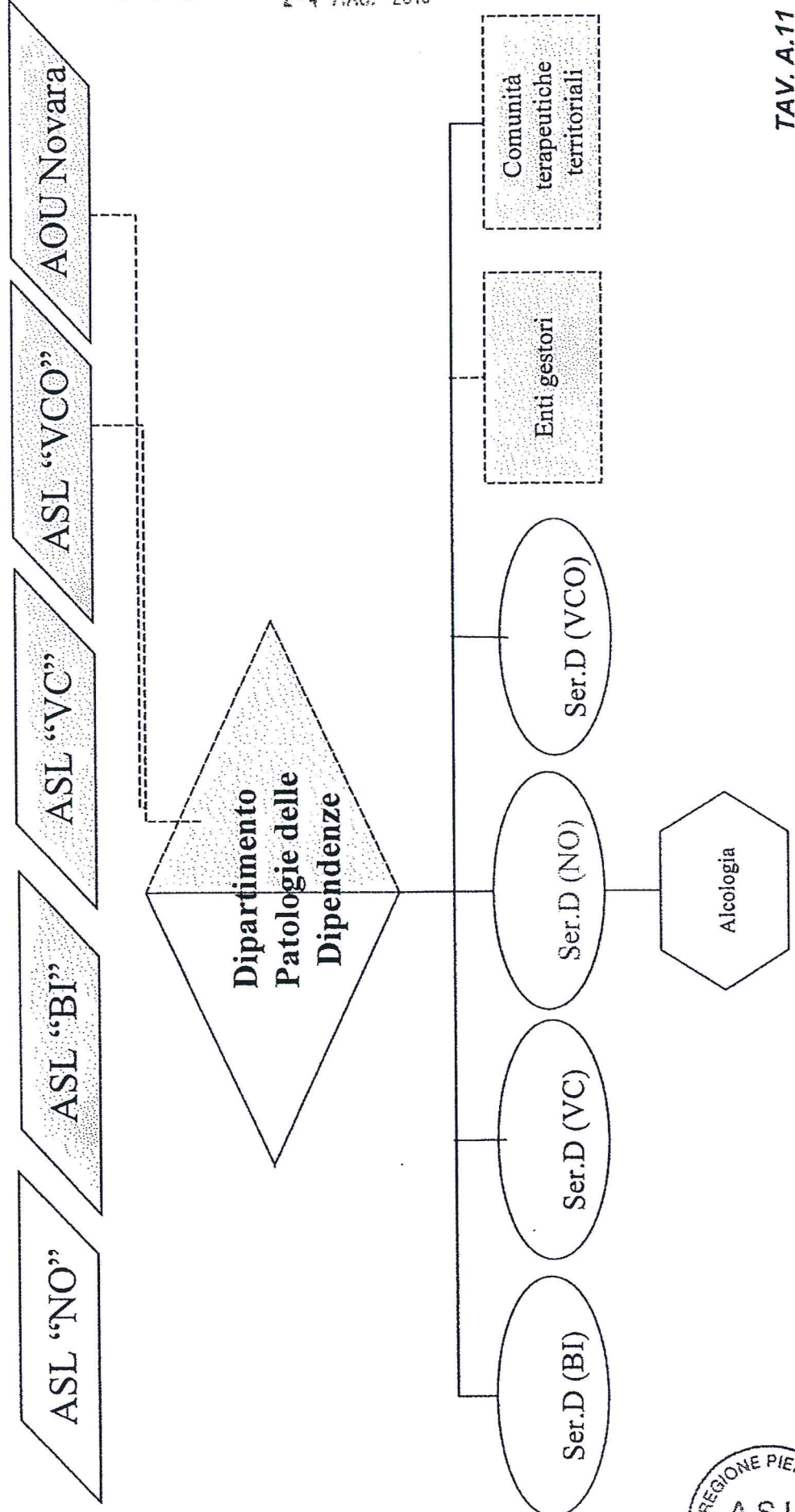
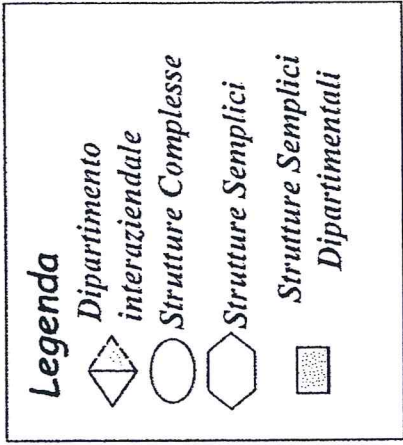


198

24 MAG. 2019



ASL "NO" - Dipartimento Patologie delle Dipendenze
 Dipartimento Interaziendale strutturale ASL NO - BI - VC - VCO

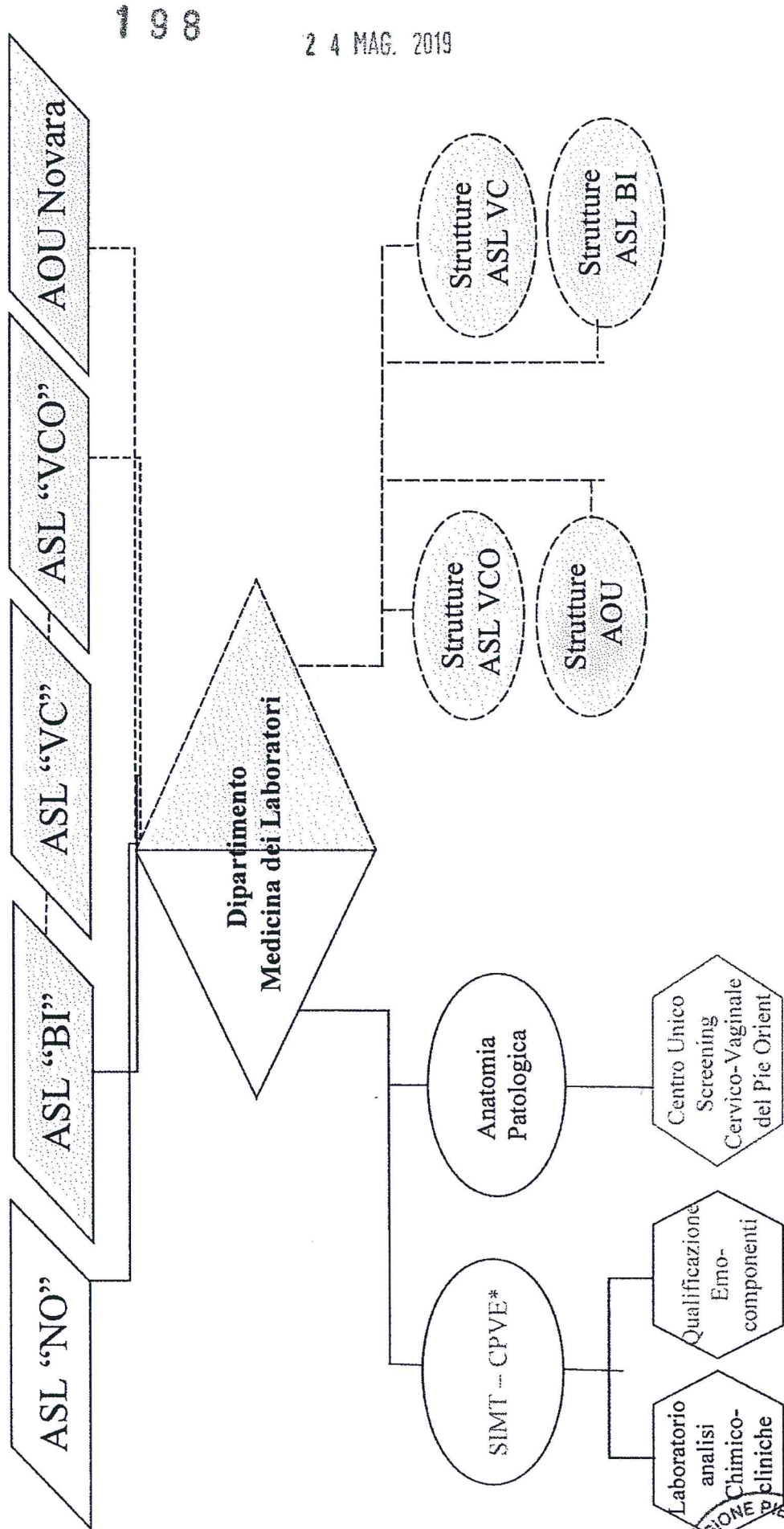
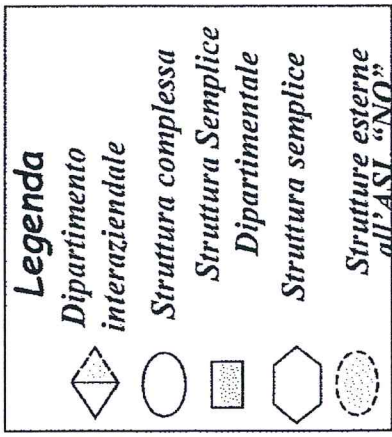


2008

24 MAG. 2019



ASL "NO" - Dipartimento Medicina dei Laboratori Dipartimento Interaziendale funzionale AOU - ASL NO - BI - VC - VCO



198

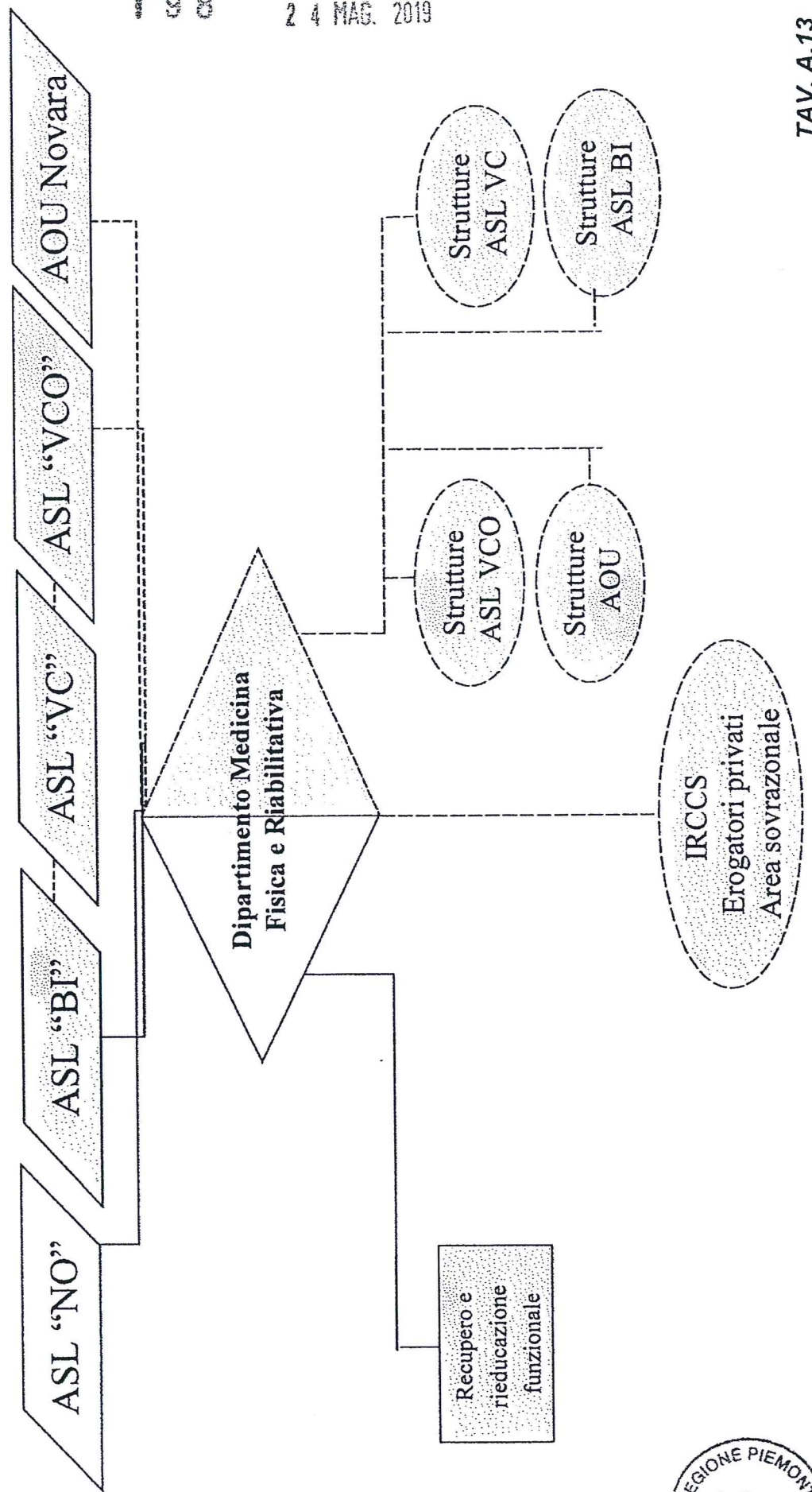
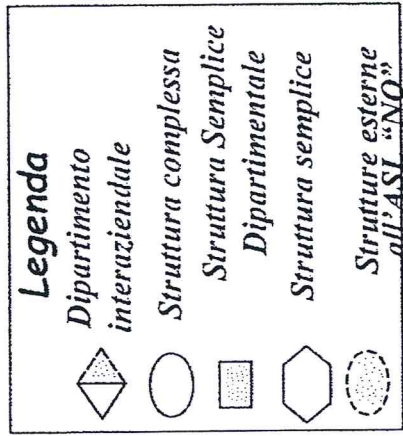
24 MAG. 2019



* Servizio Immuno Trasfusione (SIMT) - Centro Produzione e Validazione Emocomponenti (CPVE)

ASL "NO" - Dipartimento Medicina Fisica e Riabilitativa

Dipartimento Interaziendale funzionale trasmurale AOU-ASL NO-BI-VC-VCO



24 MAG. 2019

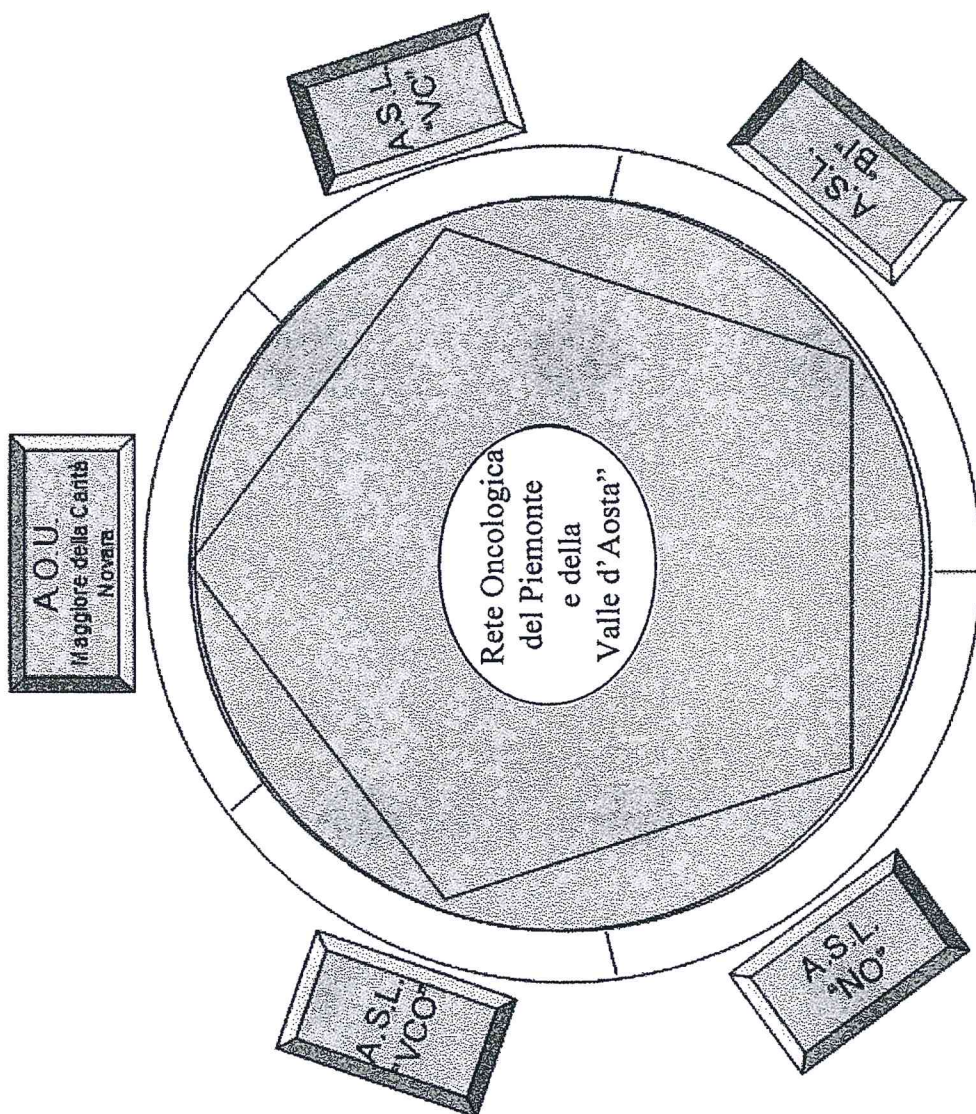


Dipartimento funzionale interaziendale ed interregionale della Rete Oncologica

del Piemonte e della Valle d'Aosta

1 9 8

2 4 MAG. 2019



Dipartimento Interaziendale 118

